

M05 $\varnothing 35\text{mm}$ TWO WAY MICRO ANGLE SOFT-CLOSING INDIVISIBLE HINGE

35杯两段力小角度缓冲固装铰链



- 开启角度: 100度
- 铰杯厚度: 10.5毫米/11.6毫米
- 铰杯直径: 35毫米
- 面板(K)尺寸: 3毫米-7毫米
- 材质: 铁镀镍
- 门可选用板厚: 14毫米-20毫米
- Opening angle: 100°
- Depth of hinge cup: 10.5mm/ 11.6mm
- Diameter of hinge cup: 35mm
- Drilling distance on the door(K): 3-7mm
- Material: cold rolled steel, nickel plated
- Range of door thickness: 14-20mm

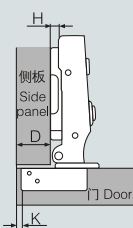
M05系列内置阻尼自动铰链(两段力)功能图 M05 Installation dimensions (Two way)

D: 盖位计算值表 Overlay
A: 间隙位计算值表 Gap



M05A 全盖 Full overlay

$$H = 14 + K - D$$

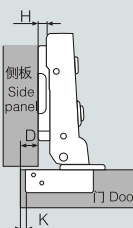


H \ D \ K	K				
	3	4	5	6	7
0	17	18	19	20	21
2	15	16	17	18	19
4	13	14	15	16	17



M05B 半盖 Half overlay

$$H = 4 + K - D$$

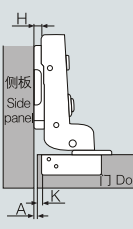


H \ D \ K	K				
	3	4	5	6	7
0	7	8	9	10	11
2	5	6	7	8	9
4	3	4	5	6	7



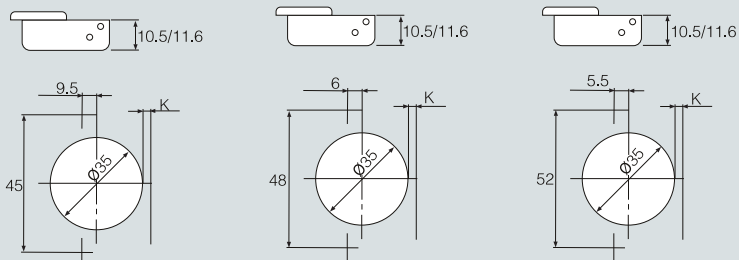
M05C 内嵌 Insert

$$H = -5 + K + A$$



H \ D \ K	K				
	3	4	5	6	7
0	2	1	0	-1	-2
2	4	3	2	1	0
4	6	5	4	3	2

铰杯种类 Hinge cup types

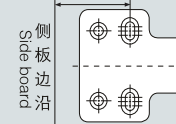
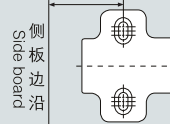


可配底座 Plate

序号 No	名称 Item no.	H值 H Value	孔型/安装尺寸L Hole type/Mounting dimension	类型 type
1	M20/M22/M24	H=0/2/4	两孔 two holes/37mm	普通 Normal
2	M40/M42/M44	H=0/2/4	四孔 four holes/37mm	普通 Normal
3				

安装尺寸L(Mounting dimension L)

安装尺寸L(Mounting dimension L)



M06 Ø35mm TWO WAY MICRO ANGLE SOFT-CLOSING CLIP-ON HINGE

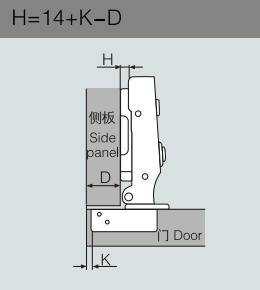
35杯两段力小角度缓冲快装铰链



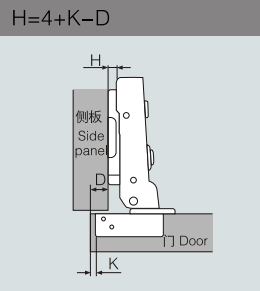
- 开启角度: 100度
- 铰杯厚度: 10.5毫米/11.6毫米
- 铰杯直径: 35毫米
- 面板(K)尺寸: 3毫米-7毫米
- 材质: 铁镀镍
- 门可选用板厚: 14毫米-20毫米
- Opening angle: 100°
- Depth of hinge cup: 10.5mm/ 11.6mm
- Diameter of hinge cup: 35mm
- Drilling distance on the door(K): 3-7mm
- Material: cold rolled steel, nickel plated
- Range of door thickness: 14-20mm

M06系列内置阻尼自动铰链(两段力)功能图 M06 Installation dimensions (Two way)

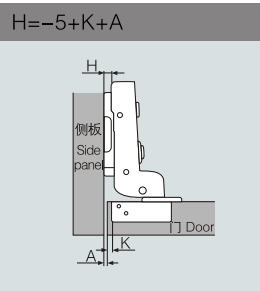
D: 盖位计算值表 Overlay
A: 间隙位计算值表 Gap



$\begin{matrix} H & K \\ D \end{matrix}$	3	4	5	6	7
0	17	18	19	20	21
2	15	16	17	18	19
4	13	14	15	16	17

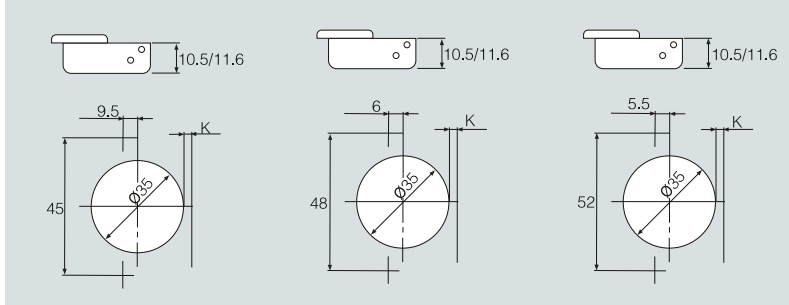


$\begin{matrix} H & K \\ D \end{matrix}$	3	4	5	6	7
0	7	8	9	10	11
2	5	6	7	8	9
4	3	4	5	6	7



$\begin{matrix} H & K \\ A \end{matrix}$	3	4	5	6	7
0	2	1	0	-1	-2
2	4	3	2	1	0
4	6	5	4	3	2

铰杯种类 Hinge cup types

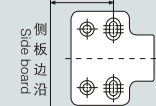
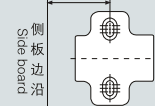


可配底座 Plate

序号 No	名称 Item no.	H值 H Value	孔型/安装尺寸L Hole type/Mounting dimension	类型 type
1	T20/T22/T24	H=0/2/4	两孔two holes/37mm	普通卡式Clip on
2	T50/T52/T54	H=0/2/4	四孔four holes/37mm	普通卡式Clip on
3	F30/F32/F34	H=0/2/4	两孔two holes/37mm	移动卡式Adjustable
4	2F30/2F32/2F34	H=0/2/4	两孔two holes/37mm	移动卡式Adjustable
5	4F30/4F32/4F34	H=0/2/4	四孔four holes/37mm	移动卡式Adjustable

安装尺寸L(Mounting dimension L)

安装尺寸L(Mounting dimension L)



H05 Ø35mm TWO WAY MICRO ANGLE SOFT-CLOSING INDIVISIBLE HINGE

35杯两段力小角度缓冲固装铰链



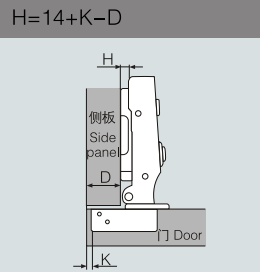
- 开启角度: 100度
- 铰杯厚度: 10.5毫米/11.6毫米
- 铰杯直径: 35毫米
- 面板(K)尺寸: 3毫米-7毫米
- 材质: 铁镀锌
- 门可选用板厚: 14毫米-20毫米
- Opening angle: 100°
- Depth of hinge cup: 10.5mm/ 11.6mm
- Diameter of hinge cup: 35mm
- Drilling distance on the door(K): 3-7mm
- Material: cold rolled steel, nickel plated
- Range of door thickness: 14-20mm

H05系列内置阻尼自动铰链(两段力)功能图 H05 Installation dimensions (Two way)

D: 盖位计算值表 Overlay
A: 间隙位计算值表 Gap



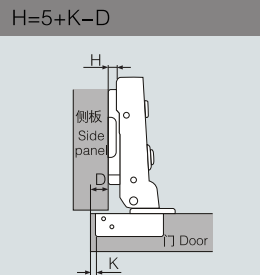
H05A 全盖 Full overlay



H \ D \ K	3	4	5	6	7
0	17	18	19	20	21
2	15	16	17	18	19
4	13	14	15	16	17



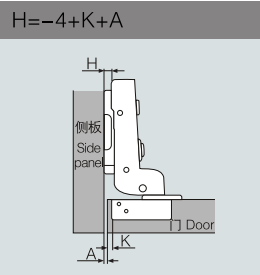
H05B 半盖 Half overlay



H \ D \ K	3	4	5	6	7
0	7	8	9	10	11
2	5	6	7	8	9
4	3	4	5	6	7

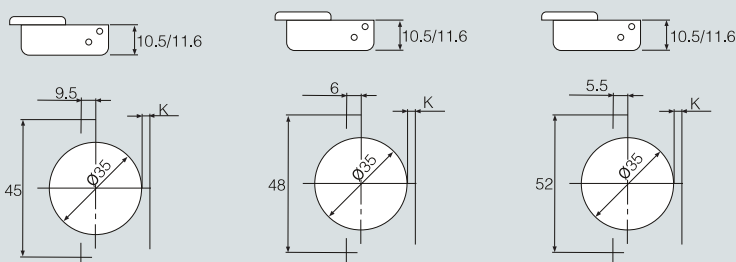


H05C 内嵌 Insert



H \ A \ K	3	4	5	6	7
0	2	1	0	-1	-2
2	4	3	2	1	0
4	6	5	4	3	2

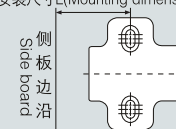
铰杯种类 Hinge cup types



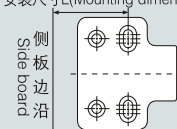
可配底座 Plate

序号 No	名称 Item no.	H值 H Value	孔型/安装尺寸L Hole type/Mounting dimension	类型 type
1	M20/M22/M24	H=0/2/4	两孔two holes/37mm	普通 Normal
2	M40/M42/M44	H=0/2/4	四孔four holes/37mm	普通 Normal
3				

安装尺寸L(Mounting dimension L)



安装尺寸L(Mounting dimension L)



T15 Ø35mm TWO WAY SOFT-CLOSING INDIVISIBLE HINGE

35杯两段力缓冲固装铰链



- 开启角度: 105度
- 铰杯厚度: 10.5毫米/11.6毫米
- 铰杯直径: 35毫米
- 面板(K)尺寸: 3毫米-7毫米
- 材质: 铁镀镍
- 门可选用板厚: 14毫米-20毫米
- Opening angle: 105°
- Depth of hinge cup: 10.5mm/ 11.6mm
- Diameter of hinge cup: 35mm
- Drilling distance on the door(K): 3-7mm
- Material: cold rolled steel, nickel plated
- Range of door thickness: 14-20mm

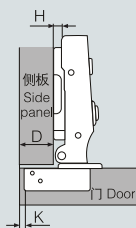
T15系列内置阻尼自动铰链(两段力)功能图 T15 Installation dimensions (Two way)

D: 盖位计算值表 Overlay
A: 间隙位计算值表 Gap



T15A 全盖 Full overlay

$$H = 14 + K - D$$

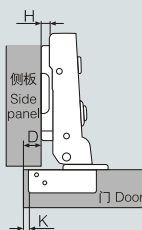


H \ D \ K	3	4	5	6	7
0	17	18	19	20	21
2	15	16	17	18	19
4	13	14	15	16	17



T15B 半盖 Half overlay

$$H = 5 + K - D$$

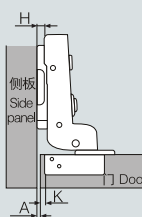


H \ D \ K	3	4	5	6	7
0	8	9	10	11	12
2	6	7	8	9	10
4	4	5	6	7	8



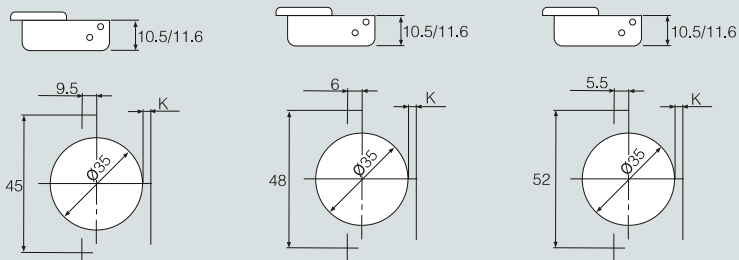
T15C 内嵌 Insert

$$H = -4 + K + A$$



H \ A \ K	3	4	5	6	7
0	1	0	-1	-2	-3
2	3	2	1	0	-1
4	5	4	3	2	1

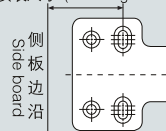
铰杯种类 Hinge cup types



可配底座 Plate

序号 No	名称 Item no.	H值 H Value	孔型/安装尺寸L Hole type/Mounting dimension	类型 type
1	FT15/FT15T	H=0	四孔 four holes/37mm	普通 Normal
2				
3				

安装尺寸L (Mounting dimension L)



T16 Ø35mm TWO WAY SOFT-CLOSING CLIP-ON HINGE

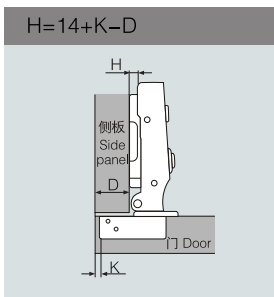
35杯两段力缓冲快装铰链



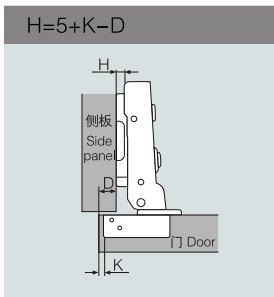
- 开启角度: 105度
- 铰杯厚度: 10.5毫米/11.6毫米
- 铰杯直径: 35毫米
- 面板(K)尺寸: 3毫米-7毫米
- 材质: 铁镀镍
- 门可选用板厚: 14毫米-20毫米
- Opening angle: 105°
- Depth of hinge cup: 10.5mm/ 11.6mm
- Diameter of hinge cup: 35mm
- Drilling distance on the door(K): 3-7mm
- Material: cold rolled steel, nickel plated
- Range of door thickness: 14-20mm

T16系列内置阻尼(卡式调节)自关铰链(两段力)功能图 T16 Installation dimensions (Two way)

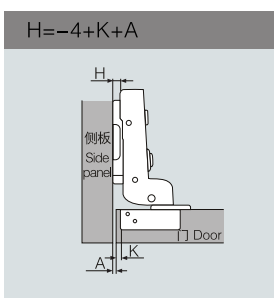
D: 盖位计算值表 Overlay
A: 间隙位计算值表 Gap



$\begin{matrix} & K \\ H \diagdown & D \end{matrix}$	3	4	5	6	7
0	17	18	19	20	21
2	15	16	17	18	19
4	13	14	15	16	17

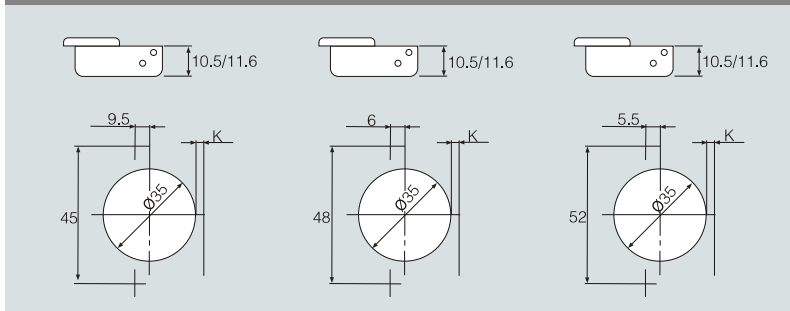


$\begin{matrix} & K \\ H \diagdown & D \end{matrix}$	3	4	5	6	7
0	8	9	10	11	12
2	6	7	8	9	10
4	4	5	6	7	8



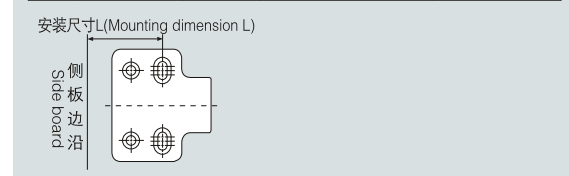
$\begin{matrix} & K \\ H \diagdown & A \end{matrix}$	3	4	5	6	7
0	1	0	-1	-2	-3
2	3	2	1	0	-1
4	5	4	3	2	1

铰杯种类 Hinge cup types



可配底座 Plate

序号 No	名称 Item no.	H值 H Value	孔型/安装尺寸L Hole type/Mounting dimension	类型 type
1	T50T	H=0	四孔four holes/37mm	普通卡式Clip on
2				
3				



T28 Ø35mm TWO WAY SOFT-CLOSING INDIVISIBLE THICK DOOR HINGE

35杯两段力缓冲固装厚门铰链



- 开启角度: 95度
- 铰杯厚度: 11.6毫米
- 铰杯直径: 35毫米
- 面板(K)尺寸: 3毫米-7毫米
- 材质: 铁镀镍
- 门可选用板厚: 15毫米-28毫米
- Opening angle: 95°
- Depth of hinge cup: 11.6mm
- Diameter of hinge cup: 35mm
- Drilling distance on the door(K): 3-7mm
- Material: cold rolled steel, nickel plated
- Range of door thickness: 15-28mm

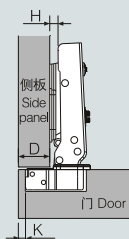
T28系列内置阻尼自动铰链(两段力)功能图 T28 Installation dimensions (Two way)

D: 盖位计算值表 Overlay
A: 间隙位计算值表 Gap



T28A 全盖 Full overlay

$$H = 14 + K - D$$

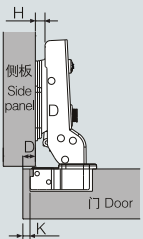


H \ D \ K	K				
	3	4	5	6	7
0	17	18	19	20	21
2	15	16	17	18	19



T28B 半盖 Half overlay

$$H = 4.5 + K - D$$

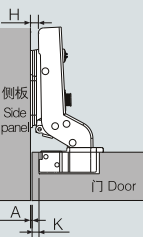


H \ D \ K	K				
	3	4	5	6	7
0	7.5	8.5	9.5	10.5	11.5
2	5.5	6.5	7.5	8.5	9.5



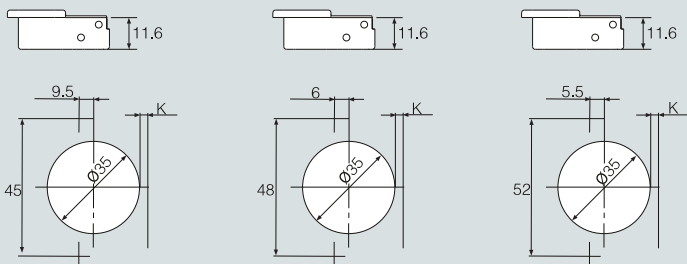
T28C 内嵌 Insert

$$H = -4 + K + A$$



H \ A \ K	K				
	3	4	5	6	7
0	1	0	-1	-2	-3
2	3	2	1	0	-1

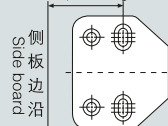
铰杯种类 Hinge cup types



可配底座 Plate

序号 No	名称 Item no.	H值 H Value	孔型/安装尺寸L Hole type/Mounting dimension	类型 type
1	FT15	H=0	四孔four holes/37mm	普通 Normal
2				
3				

安装尺寸L(Mounting dimension L)



T29 Ø35mm TWO WAY SOFT-CLOSING CLIP-ON THICK DOOR HINGE

35杯两段力缓冲快装厚门铰链



- 开启角度: 95度
- 铰杯厚度: 11.6毫米
- 铰杯直径: 35毫米
- 面板(K)尺寸: 3毫米-7毫米
- 材质: 铁镀镍
- 门可选用板厚: 15毫米-28毫米
- Opening angle: 95°
- Depth of hinge cup: 11.6mm
- Diameter of hinge cup: 35mm
- Drilling distance on the door(K): 3-7mm
- Material: cold rolled steel, nickel plated
- Range of door thickness: 15-28mm

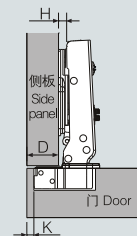
T29系列内置阻尼自动铰链(两段力)功能图 T29 Installation dimensions (Two way)

D: 盖位计算值表 Overlay
A: 间隙位计算值表 Gap



T29A 全盖 Full overlay

$$H = 14 + K - D$$

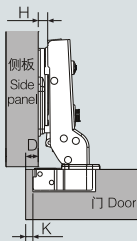


$\begin{matrix} H \\ D \end{matrix} \backslash \begin{matrix} K \\ \end{matrix}$	3	4	5	6	7
0	17	18	19	20	21
2	15	16	17	18	19



T29B 半盖 Half overlay

$$H = 4.5 + K - D$$

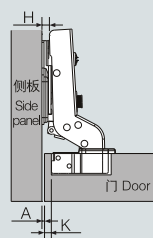


$\begin{matrix} H \\ D \end{matrix} \backslash \begin{matrix} K \\ \end{matrix}$	3	4	5	6	7
0	7.5	8.5	9.5	10.5	11.5
2	5.5	6.5	7.5	8.5	9.5



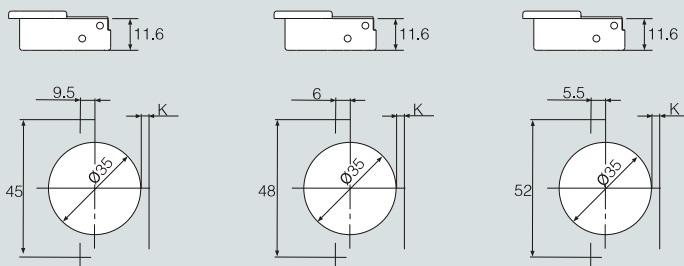
T29C 内嵌 Insert

$$H = -4 + K + A$$



$\begin{matrix} H \\ A \end{matrix} \backslash \begin{matrix} K \\ \end{matrix}$	3	4	5	6	7
0	1	0	-1	-2	-3
2	3	2	1	0	-1

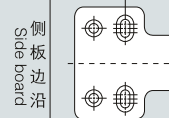
铰杯种类 Hinge cup types



可配底座 Plate

序号 No	名称 Item no.	H值 H Value	孔型/安装尺寸L Hole type/Mounting dimension	类型 type
1	T50T	H=0	四孔 four holes/37mm	普通卡式 Clip on
2				
3				

安装尺寸L(Mounting dimension L)

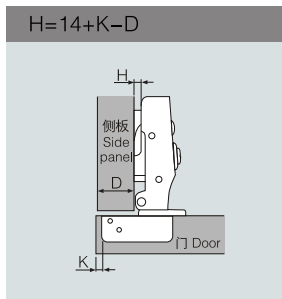


F03 Ø35mm SOFT-CLOSING INDIVISIBLE SHORT ARM HINGE
35 杯缓冲固装短臂铰链

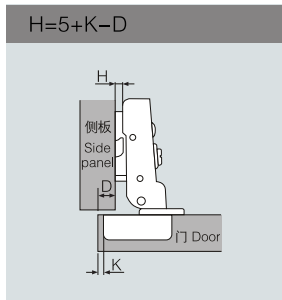


- 开启角度: 100度
- 铰杯厚度: 10.5毫米/11.6毫米
- 铰杯直径: 35毫米
- 面板(K)尺寸: 3毫米-7毫米
- 材质: 铁镀镍
- 门可选用板厚: 14毫米-20毫米
- Opening angle: 100°
- Depth of hinge cup: 10.5mm/ 11.6mm
- Diameter of hinge cup: 35mm
- Drilling distance on the door(K): 3-7mm
- Material: cold rolled steel, nickel plated
- Range of door thickness: 14-20mm

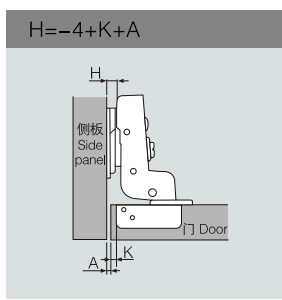
F03系列内置阻尼自动铰链功能图 F03 Installation dimensions D: 盖位计算值表 Overlay
A: 间隙位计算值表 Gap



$\begin{matrix} H & K \\ D \end{matrix}$	3	4	5	6	7
0	17	18	19	20	21
2	15	16	17	18	19
4	13	14	15	16	17

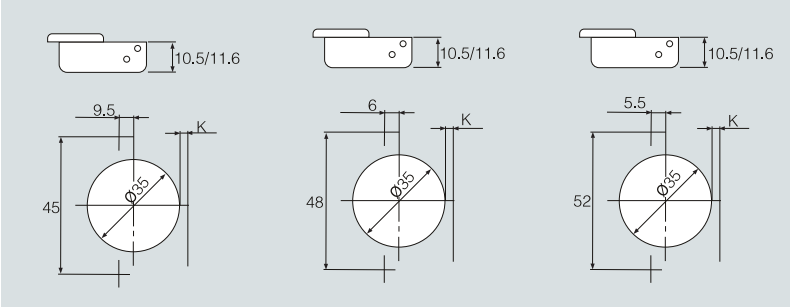


$\begin{matrix} H & K \\ D \end{matrix}$	3	4	5	6	7
0	8	9	10	11	12
2	6	7	8	9	10
4	4	5	6	7	8



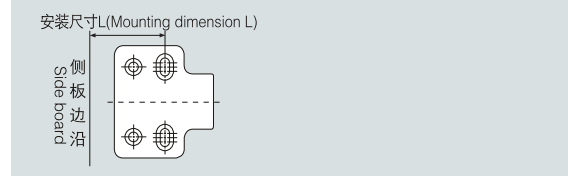
$\begin{matrix} H & K \\ A \end{matrix}$	3	4	5	6	7
0	1	0	-1	-2	-3
2	3	2	1	0	-1
4	5	4	3	2	1

铰杯种类 Hinge cup types



可配底座 Plate

序号 No.	名称 Item no.	H值 H Value	孔型/安装尺寸L Hole type/Mounting dimension	类型 type
1	F40(QY)	H=0	四孔 four holes/37mm	普通 Normal
2	F42(QY)	H=2	四孔 four holes/37mm	普通 Normal
3				



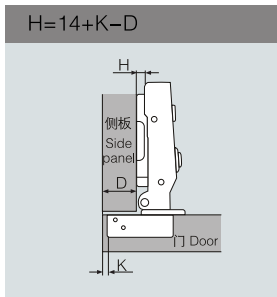
F05 Ø35mm SOFT-CLOSING INDIVISIBLE HINGE
35 杯缓冲固装铰链



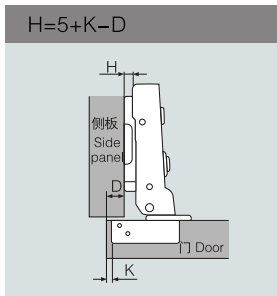
- 开启角度: 105度
- 铰杯厚度: 10.5毫米/11.6毫米
- 铰杯直径: 35毫米
- 面板(K)尺寸: 3毫米-7毫米
- 材质: 铁镀镍
- 门可选用板厚: 14毫米-20毫米
- Opening angle: 105°
- Depth of hinge cup: 10.5mm/ 11.6mm
- Diameter of hinge cup: 35mm
- Drilling distance on the door(K): 3-7mm
- Material: cold rolled steel, nickel plated
- Range of door thickness: 14-20mm

F05系列内置阻尼自动铰链功能图 F05 Installation dimensions

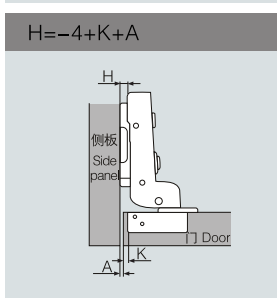
D: 盖位计算值表 Overlay
A: 间隙位计算值表 Gap



H \ D \ K	3	4	5	6	7
0	17	18	19	20	21
2	15	16	17	18	19
4	13	14	15	16	17

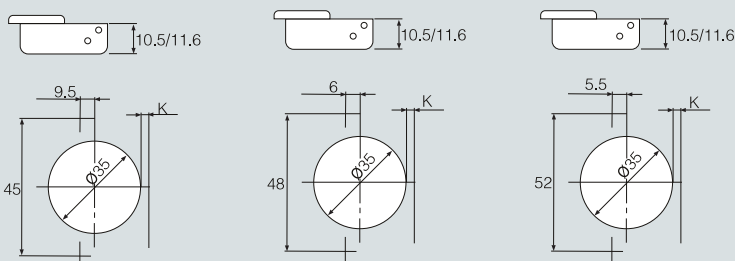


H \ D \ K	3	4	5	6	7
0	8	9	10	11	12
2	6	7	8	9	10
4	4	5	6	7	8



H \ D \ K \ A	3	4	5	6	7
0	1	0	-1	-2	-3
2	3	2	1	0	-1
4	5	4	3	2	1

铰杯种类 Hinge cup types

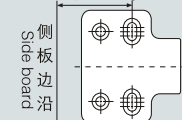
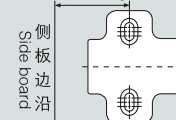


可配底座 Plate

序号 No	名称 Item no.	H值 H Value	孔型/安装尺寸L Hole type/Mounting dimension	类型 type
1	F40T	H=0	四孔 four holes/37mm	普通 Normal
2	F10S/F12S/F14S	H=0/2/4	两孔 two holes/37mm	普通 Normal
3	F40S/F42S/F44S	H=0/2/4	四孔 four holes/37mm	普通 Normal

安装尺寸L (Mounting dimension L)

安装尺寸L (Mounting dimension L)



F06 Ø35mm SOFT-CLOSING CAM ADJUSTMENT CLIP-ON HINGE

35 杯缓冲快装偏心调节铰链



可配六方位调节底座

- 开启角度: 105度
- 铰杯厚度: 10.5毫米/11.6毫米
- 铰杯直径: 35毫米
- 面板(K)尺寸: 3毫米-7毫米
- 材质: 铁镀锌
- 门可选用板厚: 14毫米-20毫米
- Opening angle: 105°
- Depth of hinge cup: 10.5mm/ 11.6mm
- Diameter of hinge cup: 35mm
- Drilling distance on the door(K): 3-7mm
- Material: cold rolled steel, nickel plated
- Range of door thickness: 14-20mm

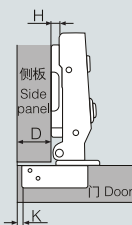
F06系列内置阻尼(卡式调动)自关铰链功能图 F06 Installation dimensions

D: 盖位计算值表 Overlay
A: 间隙位计算值表 Gap



F06A 全盖 Full overlay

$$H = 14 + K - D$$

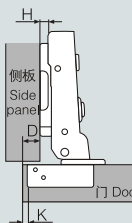


H \ K	K				
	3	4	5	6	7
0	17	18	19	20	21
2	15	16	17	18	19
4	13	14	15	16	17



F06B 半盖 Half overlay

$$H = 5 + K - D$$

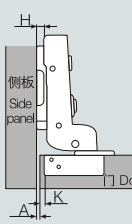


H \ K	K				
	3	4	5	6	7
0	8	9	10	11	12
2	6	7	8	9	10
4	4	5	6	7	8



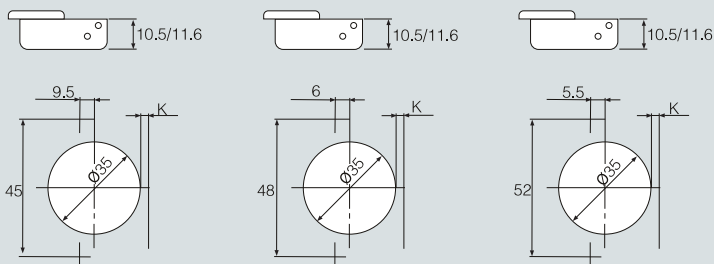
F06C 内嵌 Insert

$$H = -4 + K + A$$



H \ K	K				
	3	4	5	6	7
0	1	0	-1	-2	-3
2	3	2	1	0	-1
4	5	4	3	2	1

铰杯种类 Hinge cup types



可配底座 Plate

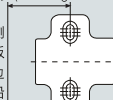
序号 No	名称 Item no.	H值 H Value	孔型/安装尺寸L Hole type/Mounting dimension	类型 type
1	T20/T22/T24	H=0/2/4	两孔 two holes/37mm	普通卡式 Clip on
2	T50/T52/T54	H=0/2/4	四孔 four holes/37mm	普通卡式 Clip on
3	F30/F32/F34	H=0/2/4	两孔 two holes/37mm	移动卡式 Adjustable
4	2F30/2F32/2F34	H=0/2/4	两孔 two holes/37mm	移动卡式 Adjustable
5	4F30/4F32/4F34	H=0/2/4	四孔 four holes/37mm	移动卡式 Adjustable

安装尺寸L(Mounting dimension L)

安装尺寸L(Mounting dimension L)

侧板边沿 Side board

侧板边沿 Side board


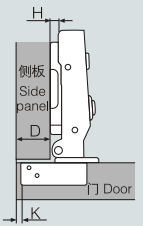

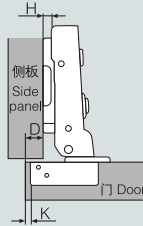

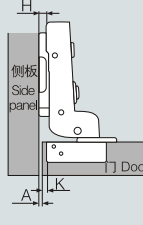




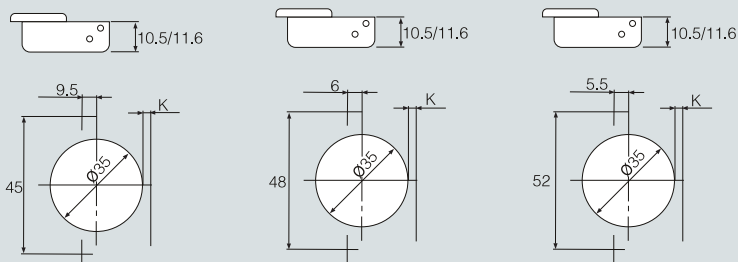
- 开启角度: 105度
- 铰杯厚度: 10.5毫米/11.6毫米
- 铰杯直径: 35毫米
- 面板(K)尺寸: 3毫米-7毫米
- 材质: 铁镀镍
- 门可选用板厚: 14毫米-20毫米
- Opening angle: 105°
- Depth of hinge cup: 10.5mm/ 11.6mm
- Diameter of hinge cup: 35mm
- Drilling distance on the door(K): 3-7mm
- Material: cold rolled steel, nickel plated
- Range of door thickness: 14-20mm

F09系列内置阻尼自动铰链(两段力)功能图 F09 Installation dimensions (Two way)

D: 盖位计算值表 Overlay
A: 间隙位计算值表 Gap

 F09A 全盖 Full overlay	$H = 14 + K - D$		<table border="1"> <tr> <th>H \ D \ K</th> <th>3</th> <th>4</th> <th>5</th> <th>6</th> <th>7</th> </tr> <tr> <th>0</th> <td>17</td> <td>18</td> <td>19</td> <td>20</td> <td>21</td> </tr> <tr> <th>2</th> <td>15</td> <td>16</td> <td>17</td> <td>18</td> <td>19</td> </tr> <tr> <th>4</th> <td>13</td> <td>14</td> <td>15</td> <td>16</td> <td>17</td> </tr> </table>	H \ D \ K	3	4	5	6	7	0	17	18	19	20	21	2	15	16	17	18	19	4	13	14	15	16	17
	H \ D \ K	3	4	5	6	7																					
	0	17	18	19	20	21																					
	2	15	16	17	18	19																					
4	13	14	15	16	17																						
 F09B 半盖 Half overlay	$H = 5 + K - D$		<table border="1"> <tr> <th>H \ D \ K</th> <th>3</th> <th>4</th> <th>5</th> <th>6</th> <th>7</th> </tr> <tr> <th>0</th> <td>8</td> <td>9</td> <td>10</td> <td>11</td> <td>12</td> </tr> <tr> <th>2</th> <td>6</td> <td>7</td> <td>8</td> <td>9</td> <td>10</td> </tr> <tr> <th>4</th> <td>4</td> <td>5</td> <td>6</td> <td>7</td> <td>8</td> </tr> </table>	H \ D \ K	3	4	5	6	7	0	8	9	10	11	12	2	6	7	8	9	10	4	4	5	6	7	8
	H \ D \ K	3	4	5	6	7																					
	0	8	9	10	11	12																					
	2	6	7	8	9	10																					
4	4	5	6	7	8																						
 F09C 内嵌 Insert	$H = -4 + K + A$		<table border="1"> <tr> <th>H \ A \ K</th> <th>3</th> <th>4</th> <th>5</th> <th>6</th> <th>7</th> </tr> <tr> <th>0</th> <td>1</td> <td>0</td> <td>-1</td> <td>-2</td> <td>-3</td> </tr> <tr> <th>2</th> <td>3</td> <td>2</td> <td>1</td> <td>0</td> <td>-1</td> </tr> <tr> <th>4</th> <td>5</td> <td>4</td> <td>3</td> <td>2</td> <td>1</td> </tr> </table>	H \ A \ K	3	4	5	6	7	0	1	0	-1	-2	-3	2	3	2	1	0	-1	4	5	4	3	2	1
	H \ A \ K	3	4	5	6	7																					
	0	1	0	-1	-2	-3																					
	2	3	2	1	0	-1																					
4	5	4	3	2	1																						

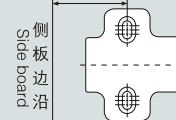
铰杯种类 Hinge cup types



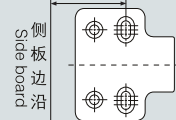
可配底座 Plate

序号 No	名称 Item no.	H值 H Value	孔型/安装尺寸L Hole type/Mounting dimension	类型 type
1	F40T	H=0	四孔 four holes/37mm	普通 Normal
2	F10S/F12S/F14S	H=0/2/4	两孔 two holes/37mm	普通 Normal
3	F40S/F42S/F44S	H=0/2/4	四孔 four holes/37mm	普通 Normal

安装尺寸L (Mounting dimension L)



安装尺寸L (Mounting dimension L)



F10 Ø35mm TWO WAY SOFT-CLOSING CAM ADJUSTMENT CLIP-ON HINGE
35杯两段力缓冲快装偏心调节铰链



- 开启角度: 105度
- 铰杯厚度: 10.5毫米/11.6毫米
- 铰杯直径: 35毫米
- 面板(K)尺寸: 3毫米-7毫米
- 材质: 铁镀镍
- 门可选用板厚: 14毫米-20毫米
- Opening angle: 105°
- Depth of hinge cup: 10.5mm/ 11.6mm
- Diameter of hinge cup: 35mm
- Drilling distance on the door(K): 3-7mm
- Material: cold rolled steel, nickel plated
- Range of door thickness: 14-20mm

可配六方位调节底座

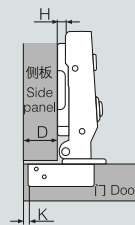
F10系列内置阻尼(卡式调动)自关铰链(两段力)功能图 F10 Installation dimensions (Two way)

D: 盖位计算值表 Overlay
A: 间隙位计算值表 Gap



F10A 全盖 Full overlay

$$H = 14 + K - D$$

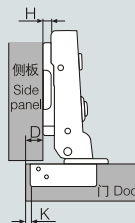


$\begin{matrix} H & K \\ D \end{matrix}$	3	4	5	6	7
0	17	18	19	20	21
2	15	16	17	18	19
4	13	14	15	16	17



F10B 半盖 Half overlay

$$H = 5 + K - D$$

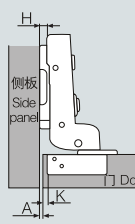


$\begin{matrix} H & K \\ D \end{matrix}$	3	4	5	6	7
0	8	9	10	11	12
2	6	7	8	9	10
4	4	5	6	7	8



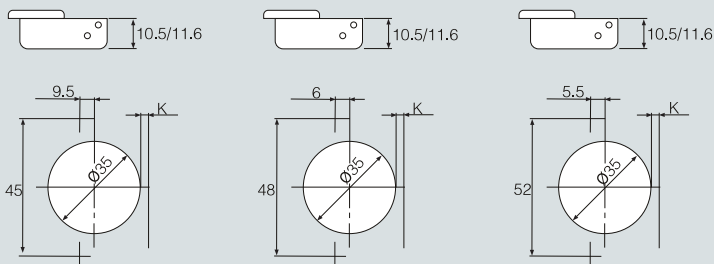
F10C 内嵌 Insert

$$H = -4 + K + A$$



$\begin{matrix} H & K \\ A \end{matrix}$	3	4	5	6	7
0	1	0	-1	-2	-3
2	3	2	1	0	-1
4	5	4	3	2	1

铰杯种类 Hinge cup types



可配底座 Plate

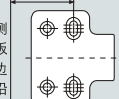
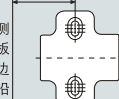
序号 No	名称 Item no.	H值 H Value	孔型/安装尺寸L Hole type/Mounting dimension	类型 type
1	T20/T22/T24	H=0/2/4	两孔two holes/37mm	普通卡式Clip on
2	T50/T52/T54	H=0/2/4	四孔four holes/37mm	普通卡式Clip on
3	F30/F32/F34	H=0/2/4	两孔two holes/37mm	移动卡式Adjustable
4	2F30/2F32/2F34	H=0/2/4	两孔two holes/37mm	移动卡式Adjustable
5	4F30/4F32/4F34	H=0/2/4	四孔four holes/37mm	移动卡式Adjustable

安装尺寸L(Mounting dimension L)

安装尺寸L(Mounting dimension L)

侧板
Side board

侧板
Side board





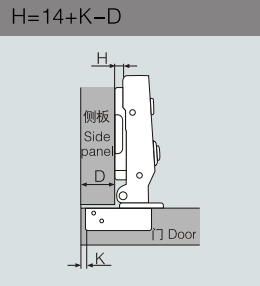
- 开启角度: 105度
- 铰杯厚度: 10.5毫米
- 铰杯直径: 35毫米
- 面板(K)尺寸: 3毫米-7毫米
- 材质: 304不锈钢 / 430不锈钢
- 门可选用板厚: 14毫米-20毫米
- Opening angle: 105°
- Depth of hinge cup: 10.5mm
- Diameter of hinge cup: 35mm
- Drilling distance on the door(K): 3-7mm
- Material: 304 stainless steel / 430 stainless steel
- Range of door thickness: 14-20mm

BF05系列内置阻尼自动铰链功能图 BF05 Installation dimensions

D: 盖位计算值表 Overlay
A: 间隙位计算值表 Gap



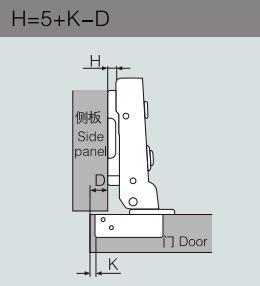
BF05A 全盖 Full overlay



$\begin{matrix} H \\ D \end{matrix} \backslash \begin{matrix} K \\ D \end{matrix}$	3	4	5	6	7
0	17	18	19	20	21
2	15	16	17	18	19
4	13	14	15	16	17



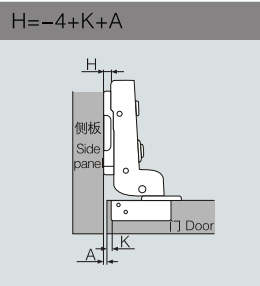
BF05B 半盖 Half overlay



$\begin{matrix} H \\ D \end{matrix} \backslash \begin{matrix} K \\ D \end{matrix}$	3	4	5	6	7
0	8	9	10	11	12
2	6	7	8	9	10
4	4	5	6	7	8

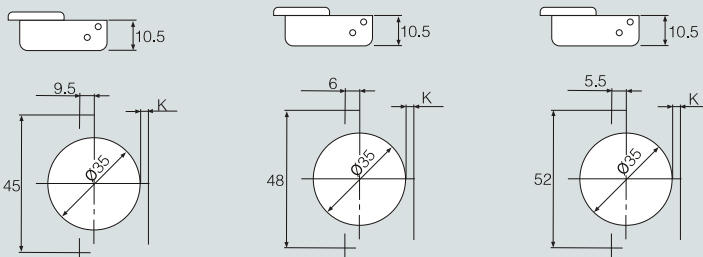


BF05C 内嵌 Insert



$\begin{matrix} H \\ A \end{matrix} \backslash \begin{matrix} K \\ A \end{matrix}$	3	4	5	6	7
0	1	0	-1	-2	-3
2	3	2	1	0	-1
4	5	4	3	2	1

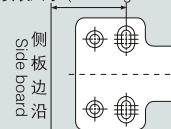
铰杯种类 Hinge cup types



可配底座 Plate

序号 No	名称 Item no.	H值 H Value	孔型/安装尺寸L Hole type/Mounting dimension	类型 type
1	BF40S	H=0	四孔four holes/37mm	普通 Normal
2	BF40T	H=0	四孔four holes/37mm	普通 Normal
3				

安装尺寸L(Mounting dimension L)





- 开启角度: 105度
- 铰杯厚度: 10.5毫米
- 铰杯直径: 35毫米
- 面板(K)尺寸: 3毫米-7毫米
- 材质: 304不锈钢 / 430不锈钢
- 门可选用板厚: 14毫米-20毫米
- Opening angle: 105°
- Depth of hinge cup: 10.5mm
- Diameter of hinge cup: 35mm
- Drilling distance on the door(K): 3-7mm
- Material: 304 stainless steel / 430 stainless steel
- Range of door thickness: 14-20mm

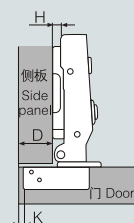
BF06系列内置阻尼(卡式调节)自关铰链功能图 BF06 Installation dimensions

D: 盖位计算值表 Overlay
A: 间隙位计算值表 Gap



BF06A 全盖 Full overlay

$H = 14 + K - D$

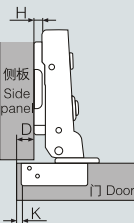


$\begin{matrix} H & K \\ D \end{matrix}$	3	4	5	6	7
0	17	18	19	20	21
2	15	16	17	18	19
4	13	14	15	16	17



BF06B 半盖 Half overlay

$H = 5 + K - D$

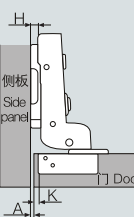


$\begin{matrix} H & K \\ D \end{matrix}$	3	4	5	6	7
0	8	9	10	11	12
2	6	7	8	9	10
4	4	5	6	7	8



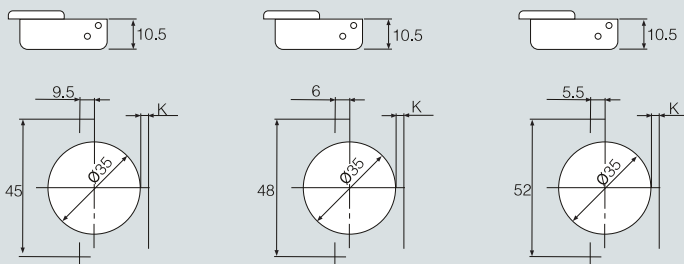
BF06C 内嵌 Insert

$H = -4 + K + A$



$\begin{matrix} H & K \\ A \end{matrix}$	3	4	5	6	7
0	1	0	-1	-2	-3
2	3	2	1	0	-1
4	5	4	3	2	1

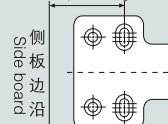
铰杯种类 Hinge cup types



可配底座 Plate

序号 No	名称 Item no.	H值 H Value	孔型/安装尺寸L Hole type/Mounting dimension	类型 type
1	BT50	H=0	四孔four holes/37mm	普通卡式Clip on
2				
3				

安装尺寸L(Mounting dimension L)



R607 Ø35mm HINGE

35 杯铰链



- 开启角度: 105度
- 铰杯厚度: 11.8毫米
- 铰杯直径: 35毫米
- 面板(K)尺寸: 3毫米-7毫米
- 材质: 铁镀镍
- 门可选用板厚: 14毫米-20毫米
- Opening angle: 105°
- Depth of hinge cup: 11.8mm
- Diameter of hinge cup: 35mm
- Drilling distance on the door(K): 3-7mm
- Material: cold rolled steel, nickel plated
- Range of door thickness: 14-20mm

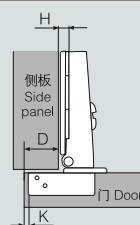
R607系列(普通型)自动铰链(一段力)功能图 R607 Installation dimensions (One way)

D: 盖位计算值表 Overlay
A: 间隙位计算值表 Gap



R607A 全盖 Full overlay

$$H = 14 + K - D$$

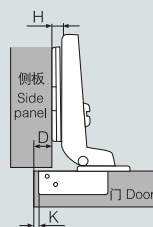


H \ K	3	4	5	6	7
0	17	18	19	20	21
2	15	16	17	18	19
4	13	14	15	16	17



R607B 半盖 Half overlay

$$H = 5 + K - D$$

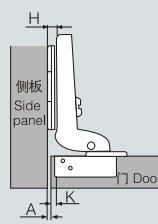


H \ K	3	4	5	6	7
0	8	9	10	11	12
2	6	7	8	9	10
4	4	5	6	7	8



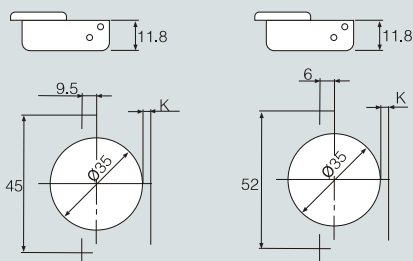
R607C 内嵌 Insert

$$H = -2.5 + K + A$$



H \ K	3	4	5	6	7
0	-0.5	-1.5	-2.5	-3.5	-4.5
2	1.5	1.5	-0.5	-1.5	-2.5
4	3.5	3.5	1.5	0.5	-0.5

铰杯种类 Hinge cup types



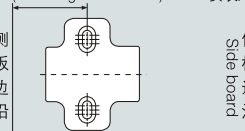
可配底座 Plate

序号 No	名称 Item no.	H值 H Value	孔型/安装尺寸L Hole type/Mounting dimension	类型 type
1	I1	H=0	两孔 two holes/30mm	普通 Normal
2	I2	H=0	四孔 four holes/30mm	普通 Normal
3	I10	H=0	两孔 two holes/30mm	普通 Normal
4	I12	H=2	两孔 two holes/30mm	普通 Normal

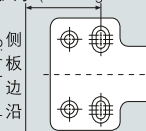
安装尺寸L (Mounting dimension L)

安装尺寸L (Mounting dimension L)

侧板边沿
Side board



侧板边沿
Side board





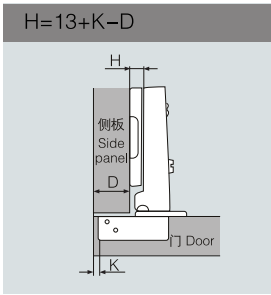
- 开启角度: 105度
- 铰杯厚度: 10.5毫米
- 铰杯直径: 35毫米
- 面板(K)尺寸: 3毫米-7毫米
- 材质: 铁镀镍
- 门可选用板厚: 14毫米-20毫米
- Opening angle: 105°
- Depth of hinge cup: 10.5mm
- Diameter of hinge cup: 35mm
- Drilling distance on the door(K): 3-7mm
- Material: cold rolled steel, nickel plated
- Range of door thickness: 14-20mm

S83系列(普通型)自关铰链(两段力)功能图 S83 Installation dimensions (Two way)

D: 盖位计算值表 Overlay
A: 间隙位计算值表 Gap



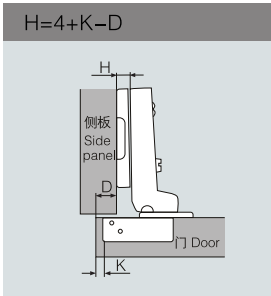
S83A 全盖 Full overlay



$\begin{matrix} K \\ H \end{matrix} / D$	3	4	5	6	7
0	16	17	18	19	20
2	14	15	16	17	18
4	12	13	14	15	16



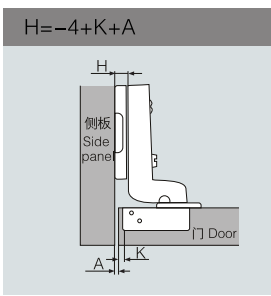
S83B 半盖 Half overlay



$\begin{matrix} K \\ H \end{matrix} / D$	3	4	5	6	7
0	7	8	9	10	11
2	5	6	7	8	9
4	3	4	5	6	7

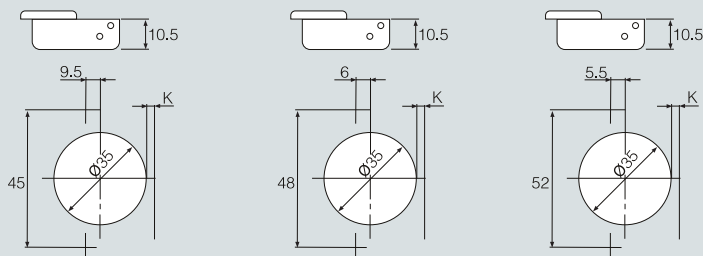


S83C 内嵌 Insert



$\begin{matrix} K \\ H \end{matrix} / A$	3	4	5	6	7
0	1	0	-1	-2	-3
2	3	2	1	0	-1
4	5	4	3	2	1

铰杯种类 Hinge cup types



可配底座 Plate

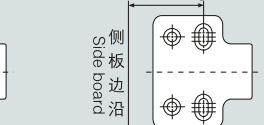
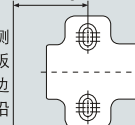
序号 No	名称 Item no.	H值 H Value	孔型/安装尺寸L Hole type/Mounting dimension	类型 type
1	J2/1822/1823	H=0/2/3	两孔two holes/37mm	普通Normal
2	I11S/1843/184-7	H=0/3/7	四孔four holes/37mm	普通Normal
3	J4	H=0	四孔four holes/37mm	普通Normal

安装尺寸L(Mounting dimension L)

安装尺寸L(Mounting dimension L)

侧板
Side board
边缘
Edge

侧板
Side board
边缘
Edge





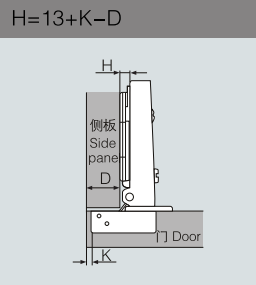
- 开启角度: 105度
- 铰杯厚度: 10.5毫米
- 铰杯直径: 35毫米
- 面板(K)尺寸: 3毫米-7毫米
- 材质: 铁镀镍
- 门可选用板厚: 14毫米-20毫米
- Opening angle: 105°
- Depth of hinge cup: 10.5mm
- Diameter of hinge cup: 35mm
- Drilling distance on the door(K): 3-7mm
- Material: cold rolled steel, nickel plated
- Range of door thickness: 14-20mm

S85系列(卡式调动)自关铰链(两段力)功能图 S85 Installation dimensions (Two way)

D: 盖位计算值表 Overlay
A: 间隙位计算值表 Gap



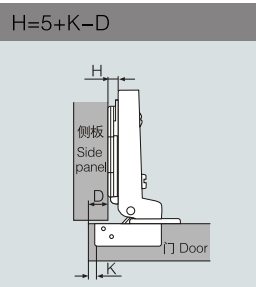
S85A 全盖 Full overlay



$\begin{matrix} H & K \\ \backslash & / \\ D \end{matrix}$	3	4	5	6	7
0	16	17	18	19	20
2	14	15	16	17	18
4	12	13	14	15	16



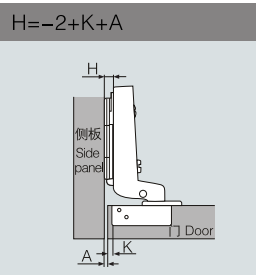
S85B 半盖 Half overlay



$\begin{matrix} H & K \\ \backslash & / \\ D \end{matrix}$	3	4	5	6	7
0	8	9	10	11	12
2	6	7	8	9	10
4	4	5	6	7	8

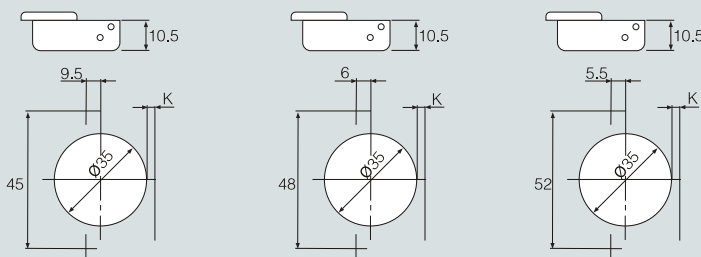


S85C 内嵌 Insert



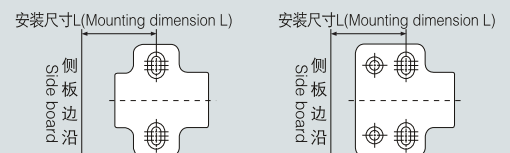
$\begin{matrix} H & K \\ \backslash & / \\ A \end{matrix}$	3	4	5	6	7
0	-1	-2	-3	-4	-5
2	1	0	-1	-2	-3
4	3	2	1	0	-1

铰杯种类 Hinge cup types



可配底座 Plate

序号 No	名称 Item no.	H值 H Value	孔型/安装尺寸L Hole type/Mounting dimension	类型 type
1	P20B	H=0/3	两孔two holes/37mm	普通卡式Clip on
2	P50B	H=0	四孔four holes/37mm	普通卡式Clip on
3	P60	H=0	四孔four holes/37mm	移动卡式Adjustable



T822 Ø35mm PUSH-TO-OPEN HINGE

35 杯反弹铰链



- 开启角度: 105度
- 反弹开门角度: 50度
- 铰杯厚度: 10.5毫米
- 铰杯直径: 35毫米
- 面板(K)尺寸: 3毫米-7毫米
- 门可选用板厚: 14毫米-20毫米
- Opening angle: 105°
- Opening angle of push to open: 50°
- Depth of hinge cup: 10.5mm
- Diameter of hinge cup: 35mm
- Drilling distance on the door(K): 3-7mm
- Range of door thickness: 14-20mm

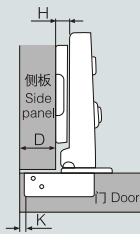
T822系列(普通型)反弹铰链(两段力)功能图 T822 Installation dimensions (Two way)

D: 盖位计算值表 Overlay
A: 间隙位计算值表 Gap



T822A 全盖 Full overlay

$$H = 13 + K - D$$

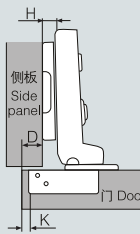


$\begin{matrix} K \\ H \end{matrix}$	3	4	5	6	7
0	16	17	18	19	20
2	14	15	16	17	18
4	12	13	14	15	16



T822B 半盖 Half overlay

$$H = 4 + K - D$$

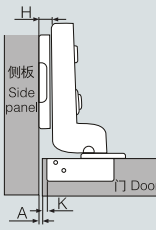


$\begin{matrix} K \\ H \end{matrix}$	3	4	5	6	7
0	7	8	9	10	11
2	5	6	7	8	9
4	3	4	5	6	7



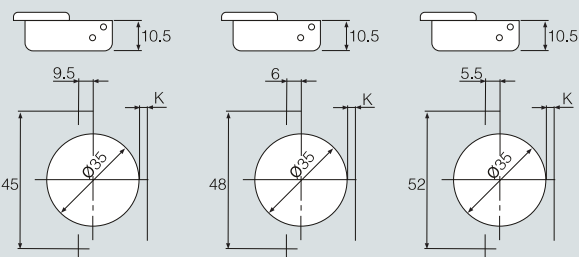
T822C 内嵌 Insert

$$H = -4 + K + A$$



$\begin{matrix} K \\ H \end{matrix}$	3	4	5	6	7
0	1	0	-1	-2	-3
2	3	2	1	0	-1
4	5	4	3	2	1

铰杯种类 Hinge cup types



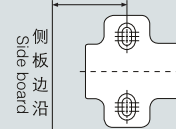
反弹铰链配件 Push-to-open accessories



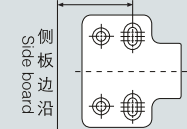
可配底座 Plate

序号 No	名称 Item no.	H值 H Value	孔型/安装尺寸L Hole type/Mounting dimension	类型 type
1	182/1822/1823	H=0/2/3	两孔two holes/37mm	普通Normal
2	184/1843/184-7	H=0/3/7	四孔four holes/37mm	普通Normal
3				

安装尺寸L(Mounting dimension L)



安装尺寸L(Mounting dimension L)



K822 Ø35mm PUSH-TO-OPEN, CLIP-ON HINGE

35 杯反弹快装铰链



- 开启角度: 105度
- 反弹开门角度: 50度
- 铰杯厚度: 10.5毫米
- 铰杯直径: 35毫米
- 面板(K)尺寸: 3毫米-7毫米
- 门可选用板厚: 14毫米-20毫米
- Opening angle: 105°
- Opening angle of push to open: 50°
- Depth of hinge cup: 10.5mm
- Diameter of hinge cup: 35mm
- Drilling distance on the door(K): 3-7mm
- Range of door thickness: 14-20mm

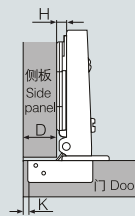
K822系列(卡式调动)自关铰链(两段力)功能图 K822 Installation dimensions (Two way)

D: 盖位计算值表 Overlay
A: 间隙位计算值表 Gap



K822A 全盖 Full overlay

$$H = 13 + K - D$$

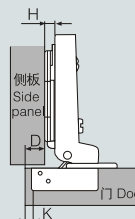


$\begin{matrix} H & K \\ D \end{matrix}$	3	4	5	6	7
0	16	17	18	19	20
2	14	15	16	17	18
4	12	13	14	15	16



K822B 半盖 Half overlay

$$H = 5 + K - D$$

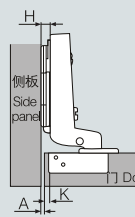


$\begin{matrix} H & K \\ D \end{matrix}$	3	4	5	6	7
0	8	9	10	11	12
2	6	7	8	9	10
4	4	5	6	7	8



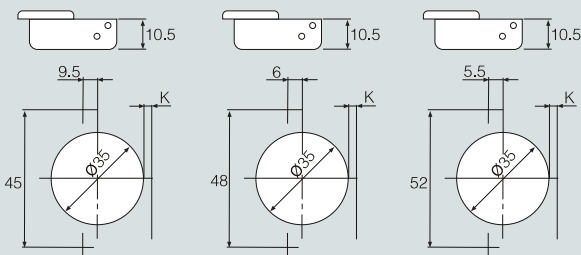
K822C 内嵌 Insert

$$H = -2 + K + A$$



$\begin{matrix} H & K \\ A \end{matrix}$	3	4	5	6	7
0	-1	-2	-3	-4	-5
2	1	0	-1	-2	-3
4	3	2	1	0	-1

铰杯种类 Hinge cup types



反弹铰链配件 Push-to-open accessories



可配底座 Plate

序号 No	名称 Item no.	H值 H Value	孔型/安装尺寸L Hole type/Mounting dimension	类型 type
1	P20B/P23B	H=0/3	两孔 two holes/37mm	普通卡式 Clip on
2	P50B	H=0	四孔 four holes/37mm	普通卡式 Clip on
3	P60	H=0	四孔 four holes/37mm	移动卡式 Adjustable

安装尺寸L (Mounting dimension L)

安装尺寸L (Mounting dimension L)

侧板边沿 Side board

侧板边沿 Side board

